

Technical Data Sheet

CONCRETE COLOR DYE



Description

Surie Porex Dyes are designed specifically for polished and exposed concrete. Our dyes penetrate into the surface of the concrete slab for extremely long-lasting color that will not wear from daily usage. Our dyes can be used as a base color or touch up for concrete that has received integral color, dry shake hardeners, acid stains or even layered to create a truly unique, mottled effect.



Instruction for Use

- Colors penetrate the surface and never wear off.
- Will not grind off during resin-grinding stages of polished concrete.
- For indoor use only.



Storage

- Store upright in safe dry place at 40-105F° (4-41C°).
- Keep product from freezing.
- Keep out of reach of children.
- Seal container after use.
- Do not mix with other chemicals.



Uses

Coloring concrete especially designed for diamond-polished concrete.

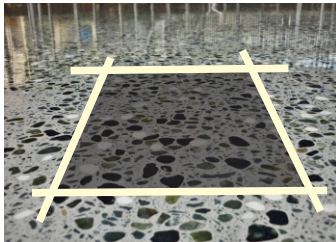
MADE IN INDIA

Technical Data Sheet

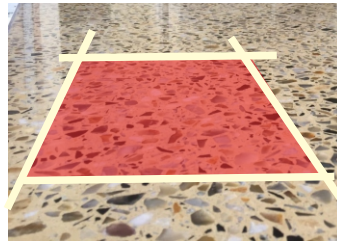


Available In

COLOR SHADES



MIDNIGHT BLACK



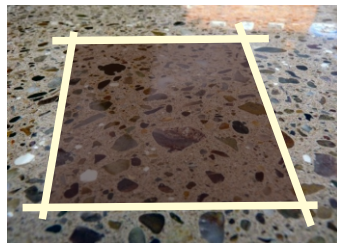
RED



BLUE



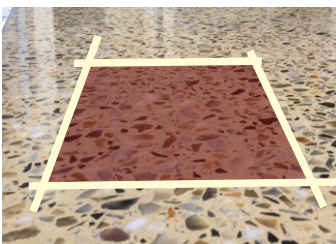
YELLOW



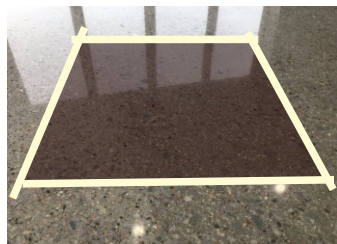
CHOCOLATE BROWN



ORANGE RED



DEEP RED



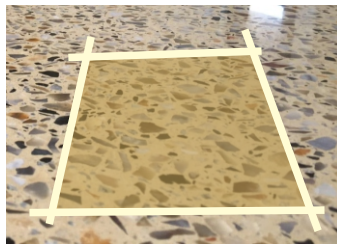
DARK BROWN



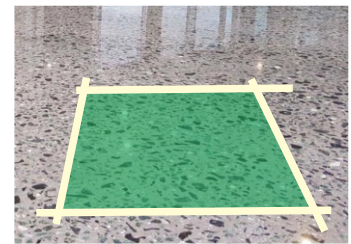
BROWN



CHERRY BROWN



WALNUT



GREEN